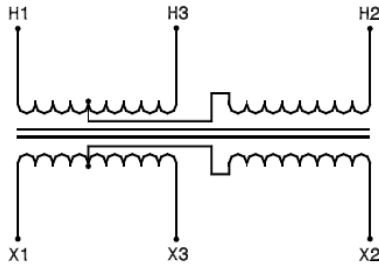
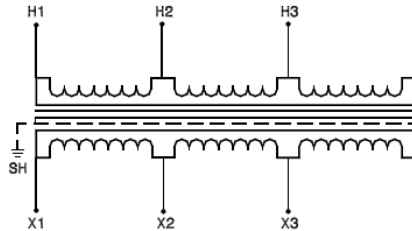


# Three Phase Connection Diagrams

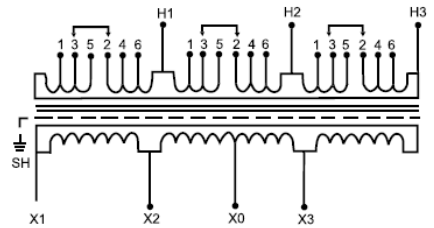
Dia. 1		Catalog Series 63-02XX	
Tap Arrangement: No Taps			
% High Voltage	High Voltage 480	Inter-Connect	Connect High Voltage Lines To
100	480		H1 & H2 & H3
% Low Voltage	Low Voltage 240	Inter-Connect	Connect Low Voltage Lines To
100	240		X1 & X2 & X3



Dia. 2		Catalog Series 76-02XXSH	
Tap Arrangement: No Taps			
% High Voltage	High Voltage 480	Inter-Connect	Connect High Voltage Lines To
100	480		H1 & H2 & H3
% Low Voltage	Low Voltage 240	Inter-Connect	Connect Low Voltage Lines To
100	240		X1 & X2 & X3

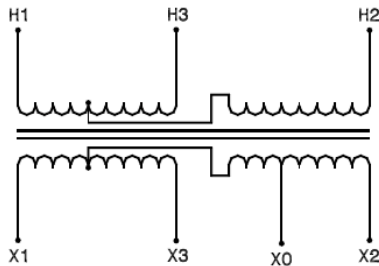


Dia. 3		Catalog Series 63-62XXSH	
Tap Arrangement: 2 - 2 1/2 FCAN (Full Capacity Above Normal) 4 - 2 1/2 FCBN (Full Capacity Below Normal)			
% High Voltage	High Voltage 480	Inter-Connect	Connect High Voltage Lines To
105	504	2 to 5	
102.5	492	4 to 5	
100	480	2 to 3	
97.5	468	3 to 4	H1 & H2 & H3
95	456	3 to 6	
92.5	444	1 to 4	
90	432	1 to 6	
% Low Voltage	Low Voltage 240	Inter-Connect	Connect Low Voltage Lines To
100	240		X1 & X2 & X3
100	120*		X2, X0 or X3, X0

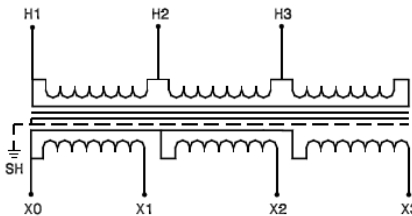


\*Lighting tap capacity is limited to 5% of nameplate rating distributed equally on either side of X0.

Dia. 4		Catalog Series 63-03XX	
Tap Arrangement: No Taps			
% High Voltage	High Voltage 480	Inter-Connect	Connect High Voltage Lines To
100	480		H1 & H2 & H3
% Low Voltage	Low Voltage 208Y / 120	Inter-Connect	Connect Low Voltage Lines To
100	208		X1 & X2 & X3
100	120		X1 to X0 X2 to X0 X3 to X0



Dia. 5		Catalog Series 76-03XXSH	
Tap Arrangement: No Taps			
% High Voltage	High Voltage 480	Inter-Connect	Connect High Voltage Lines To
100	480		H1 & H2 & H3
% Low Voltage	Low Voltage 208Y / 120	Inter-Connect	Connect Low Voltage Lines To
100	208		X1 & X2 & X3
100	120		X1 to X0 X2 to X0 X3 to X0



Dia. 6		Catalog Series 63-63XXSH	
Tap Arrangement: 2 - 2 1/2 FCAN (Full Capacity Above Normal) 4 - 2 1/2 FCBN (Full Capacity Below Normal)			
% High Voltage	High Voltage 480	Inter-Connect	Connect High Voltage Lines To
105	504	2 to 5	
102.5	492	4 to 5	
100	480	2 to 3	
97.5	468	3 to 4	H1 & H2 & H3
95	456	3 to 6	
92.5	444	1 to 4	
90	432	1 to 6	

